

## Site Notice:

## NOTIFICATION REGARDING OPPORTUNITY TO PARTICIPATE IN ENVIRONMENTAL AUTHORISATION AND WATER USE LICENSE APPLICATION PROCESS FOR THE PROPOSED GLENCORE LYDENBURG SOLAR PHOTOVOLTAIC FACILITY, IN THE THABA CHWEE LOCAL MUNICIPALITY, MPUMALANGA, SOUTH AFRICA.

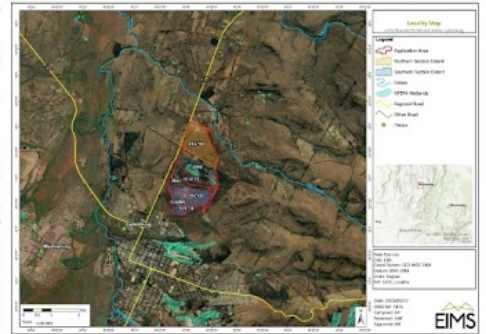
Glencore Operations South Africa (Pty) Ltd (hereafter referred to as the applicant) has appointed Environmental Impact Management Services (Pty) Ltd (EIMS) as the Environmental Assessment Practitioner (EAP) to assist with undertaking the required authorisation processes (including the statutory public participation), and to compile and submit the required documentation in support of application for:

- Environmental Authorisation (EA) in accordance with the NEMA - Listed activity/ies: Listing Notice 1 (GNR 983): Activity 11 and 14, Listing Notice 2 (GNR 984): Activity 1 and 15, Listing Notice 3 (GNR 985): Activity 12 and 14.
- Water Use Licence (WUL) in accordance with the National Water Act - NWA (Act 36 of 1998) - Listed activity/ies: Section 21 (c) and Section 21 (i).

Additional listed activities and/or water uses may be identified during the process.

The applicant wishes to develop a Solar Photovoltaic (PV) Energy Generation Facility at the Lydenburg Smelter. The generation capacity will be up to 200 megawatts. The electricity generated from the facility will be used at the Lydenburg smelter or will be wheeled to other Glencore operations. Other possible infrastructure will include an on-site substation / switching station, access roads, battery energy storage system and an 88kV power line.

The proposed project is located on Portion 143 of Farm 30 Potloodspruit, Portions 114, 457 and 471 of Farm 31 Townlands of Lydenburg, Portion 1 of Lydenburg Smelter Erf 6099, Lydenburg Smelter Erf 2540 and Lydenburg Smelter Erf 2541, within the Thaba Chweu Local Municipality, Mpumalanga. The site is located approximately 2km north of Lydenburg town central area. The centre point of the site is 25° 40'26"S; 30°28'9.47"E. EIMS will be following the procedures defined in the Environmental Impact Assessment (EIA) Regulations (GNR982 of 2014, as amended) for undertaking a Scoping and Environmental Impact Assessment (EIA) process. In accordance with Chapter 6 of the EIA Regulations, a public participation process will be undertaken. You are hereby invited to register and comment on the proposed project and application/s. In order to ensure that you are identified and registered as an I&AP and that your comments are captured, please submit your name, contact details, the reason for your interest or any comments, in writing or telephonically, to EIMS. Please note that only registered I&AP's will be informed of future project information and opportunities for participation. By registering as an interested and affected party you consent to the collection and processing of your personal information as per the EIMS Privacy Notice available at [www.eims.co.za/public-participation](http://www.eims.co.za/public-participation). In order to avoid missing out on opportunities for public participation please submit I&AP registrations, or any queries, comments, or concerns with regards to this application, as soon as possible to EIMS.



## TSEBISO YA MABAPI LE SEBAKA SA GO KGATHA TEMA MOGATONG WA KGOPELO YA LAESENSE YA TUMELELO YA TIKOLOGO LE TIRISO YA MEETSE BAKENG SA MOAGO WA GLENCORE LYDENBURG SOLAR PHOTOVOLTAIC, MMASEPALENG WA SELEGAE WA THABA CHWEE, MPUMALANGA, AFRICA BORWA.

Glencore Operations South Africa (Pty) Ltd (yona ka morago ga mo e bitšwaga modiradikgopelo) e kgathile Ditirelo tša Environmental Impact Management (Pty) Ltd (EIMS) bjalo ka Environmental Assessment Practitioner (EAP) go tšhwa go etelela pele megato ye e nyakagago ya tumelelo (go akaretša go kgatha tema ga setšhaba), gammogo le go kgoboketša le go romela di dokumente tše di nyakagago go thekga go kgopelwa ga:

- Environmental Authorisation (EA) ka go dumelelana le NEMA - Mošomo goba melomo e bontšhitšwego: Temolo ya Lelokelelo 1 (GNR 983): Mošomo 11 le 14; Temolo ya Lelokelelo 2 (GNR 984): Mošomo 1 le 15; Temolo ya Lelokelelo 3 (GNR 985): Mošomo 12 le 14.
- Laesense ya Tiriso ya Meetse ka go dumelelana le Molao wa Bosetšhaba wa Meetse (Molao 36 wa 1998) - Mošomo goba melomo e bontšhitšwego: Karolo 21 (c) le Karolo 21 (i).

Melomo ya tšaleletšo yeo e lokeleditšwego le/goba tiriso ya meetse e ka lemoga nakong ya magato wo.

Modiradikgopelo o rata go aga Moago wa Solar Photovoltaic (PV) Energy Generation kua Lydenburg Smelter. Mohlagase wo o tšaga go fehlwa o tša fihla go dimekawe tše 200. Mohlagase wo o tšaga go fehlwa moagong wo o tša šomišwa kua botololing bja Lydenburg goba wa romelwa meagong e mengwe ya melomo ya Glencore. Meago e mengwe yeo e ka bago gona e tša akaretša setšene se senyanyane sa mohlagase lefelong leo / setšene sa go switha, ditšela tša go tšena, tšhepedišo ya go boloka dipetša tša molo le dithapo tša mohlagase tša 88kV.

Projeke ye go bolelwago ka yona e direga go Karolo 143 ya Pelasa 30 kua Potloodspruit, Dikarolo 114, 457 le 471 tša Pelasa 31 ya Metsesetoropong ya Lydenburg, Karolo 1 ya Lydenburg Smelter Erf 6099, Lydenburg Smelter Erf 2540 le Lydenburg Smelter Erf 2541. Mmaseleng wa Selegae wa Thaba Chweu, Mpumalanga. Lefelo le le mo e ka bago dikilomithara tše 2 ka letša la bogare bja toropo ya Lydenburg. Bogare bja lefelo le ke 25° 40'26"S; 30°28'9.47"E. EIMS e tša latela ditšhepedišo tše di hlalositšwego ka go Ditalelo tša Environmental Impact Assessment [EIA (GNR982 wa 2014, go etša ge di fetotšwe)] go etelela pele megato wa go Sekaseka Bogolo bja Mošomo le go Kgomo ga Tikoolog (EIA) ka go dumelelana le Kgaolo 6 ya Ditalelo tša EIA, setšhaba le sona se tšio kgopelwa go kgatha tema. Ka baka leo, o kgopelwa go ingwaditše le go ntlha sa mafahleg ka projeke ye go bolelwago ka yona le kgopelo/dikgopelo. Go ntefetša gore o tšebja le gore o ingwaditše bjalo ka yo a nago le kgathago le leloko le le ameago (le gore, I&AP) le gore maikutlo a gago a ngwala tšene, hle romela ba EIMS leina la gago, tšhedimošo ya dikgokaganyo, lebaka la go ba ga gago le kgathago goba maikutlo afe goba afe, ka go ngwala goba ka megala. Hle tšeba gore ke feela ba ba ingwaditšwego bjalo ka I&AP ba tiago go tšebiswa ka diprojeke tša nakong e tšaga le ka dibaka tša go kgatha tema. Ka go ingwaditše bjalo ka yo a nago le kgathago le leloko le le ameago, o dumela go kgoboketša le go dirišwa ga tšhedimošo ya gago ya motho ka noši ka go dumelelana le Temolo ya Sephiri ya EIMS yeo e hwetšagalago go [www.eims.co.za/public-participation](http://www.eims.co.za/public-participation). E le gore o se fetwe ke dibaka tša go kgatha tema ga setšhaba, hle romela kapela ka mo go kgonegago go EIMS boingwaditše bja gago bja I&AP, dipotšišo dife goba dife, maikutlo goba dipelaelo tša gago mabapi le kgopelo ye, go:

## KENNISGEWING MET BETREKKING TOT GELEENTHEID VIR DEELNAME AAN DIE AANSOEKPROSES VIR OMGEWINGSMAGTING EN WATERGEBRUIKSENSIE VIR DIE VOORGESTELDE GLENCORE LYDENBURG-SONKRAG FOTOVOLTAÏESE FASILITEIT, IN DIE THABA CHWEE PLAASLIKE MUNISIPALITEIT, MPUMALANGA, SUID-AFRIKA.

Glencore Operations South Africa (Pty) Ltd (hierna verwys as die aansoeker) het Environmental Impact Management Services (Pty) Ltd (EIMS) aangewys as die omgewingsassesseringspraktisyn (EAP) vir die onderneming van die vereiste magtigingsprosesse (wat die statutêre openbare deelname insluit), en om die vereiste dokumentasie op te stel en in te dien ter ondersteuning van die aansoek vir die volgende:

- Omgewingsmagtiging (EA) in ooreenstemming met die NEMA-gelyste aktiwiteit(e): Lysinskrywingskennisgewing 1 (GNR 983): Aktiwiteit 11 en 14; Lysinskrywingskennisgewing 2 (GNR 984): Aktiwiteit 1 en 15; Lysinskrywingskennisgewing 3 (GNR 985): Aktiwiteit 12 en 14.
- Watergebruiksensie (WUL) ooreenkomstig die Nasionale Waterwet – NWA (Wet 36 van 1998) - Gelyste aktiwiteit/e: Afdeling 21 (c) en Afdeling 21 (i).

Bykomende gelyste aktiwiteite en/of watergebruik kan tydens die proses geïdentifiseer word.

Die aansoeker wil 'n sonkrag-fotovoltaïese (PV) energie-opwekkingsfasiliteit by die Lydenburg-smelter ontwikkel. Die opwekkingskapasiteit sal tot 200 megawatt wees. Die elektrisiteit wat uit die fasiliteit opgewyk word, sal by die Lydenburg-smelter gebruik word of sal na ander Glencore-betryfsighede vervoer word. Ander moontlike infrastruktuur sal 'n substasie/skakelstasie op die perseel, toegangswaie, bergingsstelsel vir batteryeënergie en 'n 88kV-kraglyn insluit.

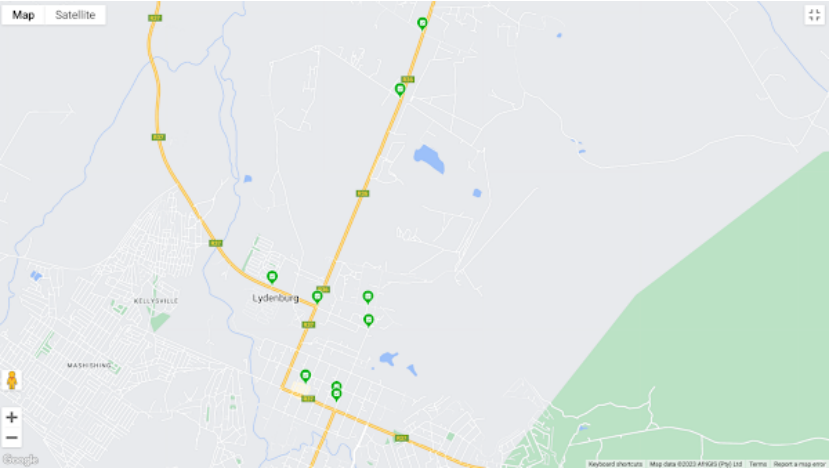
Die voorgestelde projek is geleë op gedeelte 143 van Plaas 30 Potloodspruit, gedeeltes 114, 457 en 471 van Plaas 31 Townlands van Lydenburg, gedeelte 1 van Lydenburg-smelter erf 6099, Lydenburg-smelter erf 2540 en Lydenburg-smelter erf 2541 binne die Thaba Chweu plaaslike munisipaliteit, Mpumalanga. Die perseel is ongeveer 2km noord van Lydenburg se sentrale dorpsgebied geleë. Die perseel se middelpunt is 25° 40'26"S; 30°28'9.47"E. EIMS sal die prosedures volg wat omskryf word in die regulasies oor omgewingsimpakstudies (EIA) [GNR982 van 2014, soos gewysig] om die omvangbepalings- en omgewingsimpakstudie (EIA) proses te onderneem. In ooreenstemming met hoofstuk 6 van die EIA-regulasies, sal 'n proses van openbare deelname onderneem word. U word hiermee uitgenooi om te registreer en kommentaar te lewer op die voorgestelde projek en aansoek/e. Om te verseker dat u geïdentifiseer en geregistreer is as 'n belanghebbende en geïnfekteerde party (B&GP) en dat u kommentaar vasgelê word, dien asseblief u naam, kontakbesonderhede, die rede vir u belangstelling of enige kommentaar, skriftelik of telefonies, by EIMS in. Neem asseblief kennis dat slegs geregistreerde B&GP's ingelig sal word oor toekomstige projekinligting en geleenthede vir deelname. Deur te registreer as 'n belanghebbende en geïnfekteerde party stem u in tot die inwinning en verwerking van u persoonlike inligting soos dit ooreenkomstig EIMS se privaatheidskennisgewing beskikbaar is by [www.eims.co.za/public-participation](http://www.eims.co.za/public-participation). Om te verhoed dat u geleentheid vir openbare deelname misloop, dien asseblief B&GP-registrasies, of enige navraag, kommentaar of bevestigings met betrekking tot hierdie aansoek, so gou moontlik by EIMS.

Contact Person/ Kontak Persoon/ Motho ya o ka ikgakaganyago le Yena : Jolene  
EIMS Reference Number/ EIMS Verwysingsnommer/ Nomoro ya Tšhupetšo ya EIMS: 1476  
Postal Address/ Posadres/ Aterese ya Poso: P.O. Box 2093, Pinegowrie 2123

Fax/ Faks/ Fekese: (086) 571 9047  
E-mail/ E-pos/ E-mele : [lydenburgpv@eims.co.za](mailto:lydenburgpv@eims.co.za)  
Telephone/ Telefoon/ Mogala: (011) 789 7170

**EIMS** ENVIRONMENTAL  
IMPACT  
MANAGEMENT  
SERVICES

Locality Map:





Site Notice: 23/11/2023 07:31:42; GPS Coordinates: -25.056558, 30.464609

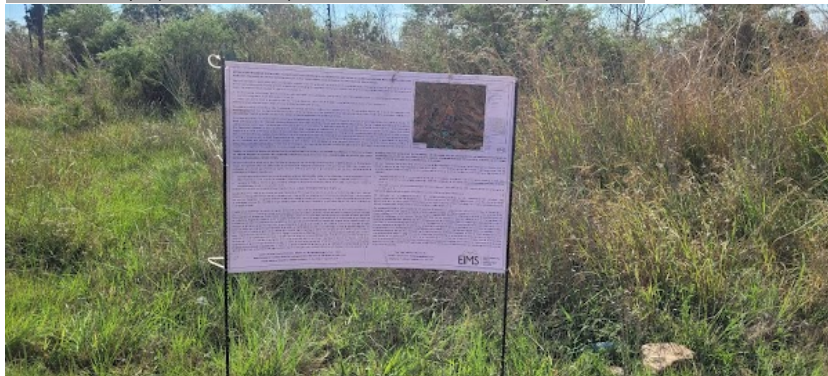


Site Notice 1



Site Notice 1

Site Notice: 23/11/2023 07:39:32; GPS Coordinates: -25.048218, 30.467701



Site Notice 2



Site Notice 2

Site Notice: 23/11/2023 07:42:01; GPS Coordinates: -25.080189, 30.446815





Site Notice 3



Site Notice 3

Site Notice: 23/11/2023 07:48:19; GPS Coordinates: -25.082669, 30.453065



Site Notice 4



Site Notice 4

Site Notice: 23/11/2023 07:54:21; GPS Coordinates: -25.082271, 30.458560





Site Notice 5



Site Notice 5

Site Notice: 23/11/2023 07:58:23; GPS Coordinates: -25.085595, 30.460211

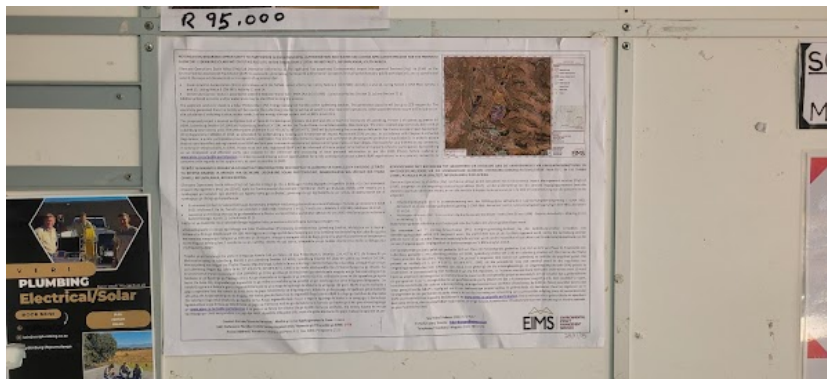


Site Notice 6



Site Notice 6

Poster: 23/11/2023 08:02:31; GPS Coordinates: -25.092616, 30.451462



Poster - Pick n Pay Lydenburg



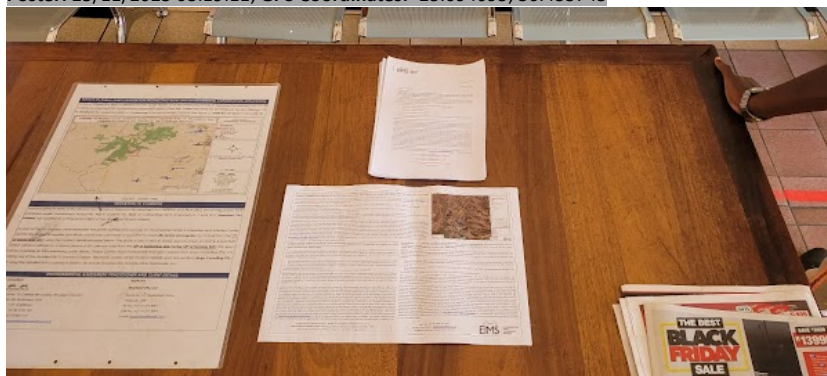
Poster - Pick n Pay Lydenburg

Poster: 23/11/2023 08:12:58; GPS Coordinates: -25.094929, 30.455753



Poster - Lydenburg Public Library

Poster: 23/11/2023 08:19:11; GPS Coordinates: -25.094095, 30.455745



Poster and Handouts - Thaba Chweu Local Municipality, Lydenburg