

# LEKWALO LA TSHEDIMOSETSO E E AMANANG LE SENO

## KOPO YA TETLA YA TSA TIKOLOGO YA THUNGELA LEPHALALE COAL BED METHANE



Sekai sa LNG Production Facility



Sekai sa CBM Well

### BOIKAELELO JWA TOKUMENTE ENO:

- Background Information Document (BID) eno e go tlamela, o le Interested and Affected Party (I&AP), ka dintlhakakaretso tsa porojeke e e tshithintsweng.
- BID e go laletsa, jaaka I&AP, go tsaya karolo mo Thulaganyo ya go Nna le Seabe ga Baagi e e tlhokegang.
- BID e go tlamela, jaaka I&AP ka tshono ya go thusa le go nna le seabe mo go tlhamiweng ga Dipego Tsa Patlisiso le Environmental Impact Assessment (EIA).
- BID gape e go tlamela, jaaka I&AP tshono ya go tlamela setlhopha sa porojeke ka dikagelo tsa gago, dilo tse di go tshwenyang le tse o kगतलhanong le tsone mo porojekeng e e tshithintsweng.

### MATSENO:

Thungela Resources Limited (nako e e fetileng Anglo), morago fano e bidiwa Modirakopo, e tlhomile Environmental Impact Management Services (EIMS) jaaka Environmental Assessment Practitioner (EAP) go thusa ka go dira dithulaganyo tse di tlhokegang kopo tsa tikologo, go akaretsa go dira dipego tse di tlhokegang le go dira ditherisano le malao, go thusa porojeke e e tshithintsweng jaaka go tlhalositswe fano.

Go lebilwe pele gore ditiro di le mmalwa tse di thathamisitseng kgotsa tse di laolwang tse di mo molaong o o latelang go ka diragala gore di bakwe ke porojeke e e tshithintsweng:

- Molao wa Bosetšhaba wa Tsamaiso ya Tikologo (National Environmental Management Act) - NEMA (Molao 107 wa 1998)
- Molao wa Bosetšhaba wa Tsamaiso ya Tikologo (National Environmental Management Act: Air Quality Act)- NEM:AQA (Molao 39 wa 2004)
- Molao wa Bosetšhaba wa Tsamaiso ya Tikologo: Molao wa Matlakala (National Environmental Management: Waste Act)- NEM:WA (Molao 59 wa 2008)
- Molao wa Bosetšhaba wa Metsi – NWA (Molao 36 wa 1998)

Dipatlafalo ka nepo tsa molao wa tikologo le ditiro di tla tlhomamisiwa ka nako ya kgato ya patlisiso ya porojeke eno.

Thulaganyo ya Environmental Impact Assessment (EIA) e tla dirwa go dumalana le Melawana ya Kgaolo 6 ya EIA, 2014 (GNR 982) e fetotswe kafa tlase ga NEMA (jaaka e tlhabolotswe). Thulaganyo e e feletseng ya EIA e tla latelwa e e akaretsang kgato ya patlisiso e e leng 'kgonagalo' mme bogolo e le kgato ya tshekatsheko ya pego ya tikologo ya porojeke, e e latelwang ke tshekatsheko dintlha tse di oketsegileng tsa kgato ya EIA.

#### Boikaelelo Jwa Background Information Document (BID):

Boikaelelo jwa BID ke go:

- Tlamela dintlhakakaretso tsa Tetla ya Tsa Tikologo/Dikopo Tsa Laesense mmogo le dithulaganyo tsa go nna le seabe ga baagi tse di tla dirwang go porojeke e e tshithintsweng;



- Letla Interested and Affected Parties (bol&AP) go nna le tshono ya go tshologanya mo go oketsegileng porojeke e e tshithintsweng le go kopa kgotsa go aba tshedimosetso; le
- Go tlamela dintlha kafa bol&AP ba ka kwadisang kgatlhego ya bone le go tsenya dikakgelo mo porojekeng. Go botlhokwa go elatlhoko gore ke bol&AP ba ba ikwadisitseng fela ba tla nnang le puisano go ya pele kaga porojeke mo nakong ya thulaganyo ya EIA (sekai, taletso go sekaseka le go akgela mo Patlisisong le Dipego Tsa EIA).

## LEFELO, SEKALE, LE BOGOLO JWA POROJEKE E E TSHITSHINTSWENG:

### TLHALOSO YA POROJEKE:

Mokopi ke ene motshwari wa Tetla ya Petroleum Exloration Right (ER) mabapi le Coal Bed Methane (CBM) mo mmasepaleng wa Lephallale, Porofense ya Limpopo, Afrika -Borwa. Dipatlisiso tsa ditiragalo tse di dirilweng go dumelana le (ER) dibotshitse ditlamelo tsa (CBM) tse difitlhelegang go ka ntshiwa. Mokopi o ikaelela go tsenya kopo go Petroleum Agency of South Africa (PASA) go fitlhelela tshwanelo ya tlhagiso gore a ntshe le go tlhagisa ditlamelo tsa (CBM).

Mokopi o ikaetse go ntsha khumo ya coal-bed methane (CBM) go tswa mo kgaolong ya PR ka kgato ka kgato. Ga jaana go solofetswe dikgato di le nne go fitlhelela ntshokuno e e feletseng ya lefelo leo le akaretsang bogolo jwa diheketara di le 134 155 (ha). Dikarolo tsa ntlha tsa ntshokuno tse di leng ka fa tlase ga kopo eno ya EA, e leng Karolo 1 le 2, di na le mesima e le 9 le mesima e le 305 ka go latelana e e tla golagangwang ka marangrang a go gobokanya gase go ya kwa lefelong le le tse tsweng la go dira gase. Mo godimo ga moo, didiba tse 10 tse di leng teng, tse di agilweng ka nako ya go dira patlisiso (tse di bidiwang 5 Spot ya ntlha le 5 Spot ya bobedi) le tsone di tla golagangwa le lefelo la go dira gase. **Kopo ee diriwang e akareletsa fela dikgato 1 le 2 tse go buiwang ka tsone ka fa godimo mme Di laesense kgotsa tela tse eketsegileng di tla tlhokagala mo nakong ya go simolola kgato 3 le 4.**

Gore go fitlhelelwe gase e e intsi thata, thekololo ya lefelo entse e diriwa. Thulaganyo ya godirisiwa ga gase e akareletsa kago ya lefelo la gokitlanya le gofetola gore gotlhagisiwe gase ya tlhologo. (LNG), ee tla tsamaisiwang ka dipangwa tsa tsela. Gotlhagisiwa ga kgato 1 le 2 go lebetse gore go tla tsaya nako ekang di jara tsetse gotswa mo letsatsing le ka lone di laesense di tla fitlhelelwang ka lone.

### LEFELO

Tikologo ya kopo ya PR e akareletsa dikarolo tsa dipolasi tse ka nnang 244 le tikologo ya boleng bo kang diheketara tse 134 155 ha. Tikologo ya kopo ya PR le EA e fa tlase ga Mmasepala wa Lephallale le Mmasepala wa tikologo ya Waterberg, Porofense ya Limpopo. Kopo ya EA e fitlhelelwa boleng ba dikilomitara tse 14km gotswa go bokone bophirima ba toropo ya Lephallale, 5km bokone ba Marapong mme boleng bo kang 11km bokone bophirima ba Onverwacht.

- Tlhaloso ya Kgaolo
  - Mmasepala wa Tikologo: Lephallale
  - Porofense: Limpopo
- Ditoropo tse di gaufi thata kgotsa dintlha tsa kgatlhego: Lephallale (~14km bokonebophirima), Onverwacht (~11km bokonebophirima), Marapong (~5km bokone)

Tsweetswee leba mmapa wa tikologo kwa bokhutlong jwa BID eno.

## DILO TSE DI BATLEGANG GO YA KA MOLAO

Porojeke e e tshithintsweng e tlhoka ditumelelo tse dirileng, dikamogelo, ditetla le/kgotsa dilaesense. Dipatlafalo tse di latelang di supilwe ka totobalo mo kगतong eno:

Molao o o Maleba	Ditiro tse di thathamisitsweng kgotsa dilo tse di bakang	Tlhokego ya Tumelelo, Kamogelo, Laesense, kgotsa Tetla
Kgaolo 5 ya NEMA	GNR 983 (2014, jaaka e tlhabolotswe): Ditiro 6, 8, 9, 10, 11, 12, 13, 16, 19, 21, 21C, 21D, 21F, 24, 25, 28, 34, 41, 45, 46,	Tumello ya Tikoloho (EA)



	47, 48, 50, 51, 53, 56, 57, 59, 60, 66A, le 67. GNR 984 (2014, jaaka e tlhabolotswe): Ditiro 1, 2, 4, 5, 6, 7, 15, 20, le 25. GNR 985 (2014, jaaka e tlhabolotswe): Ditiro 2; 4; 12; 13; 14; 15; 16; 22; 23; le 24.	
<b>Kgaolo 4 le 5 ya NEM:AQA</b>	GNR 893 (2013 jaaka e tlhabolotswe): Tiro e e rulagantsweng: Seka-setlhopha 2.4 (Go Boloka le go Tshwara Dikumo Tsa Petroleum).	Atmospheric Emissions Licence (AEL)
<b>Kgaolo 4 ya NEM:WA</b>	GN921 (2013 jaaka e tlhabolotswe): Ditiro Tsa Botsamaisi Jwa Matlakala A1; A5; A6; A7; A12; A13; A14; B1; B10; B11; C1; C2; C6; le C7.	Go ya ka ditlhokego tsa Laesense ya Tsamaiso ya Matlakala (WML)
<b>Kgaolo 4 ya NWA</b>	NWA, Karolo 21 Ditiriso Tsa Metsi: 21a; 21b; 21c; 21e; 21f; 21g; 21h; 21i; le 21j	Laesense ya Tiriso ya Metsi (WUL).

Ka nepo ditiro tse di thathamisitsweng tse di bakilweng ke porojeke eno di tla tokafadiwa ka kgato ya patlisiso. **E le phelelo ya go baka ditlamelo tse di fa godimo, go na le patlafalo ya go dira Environmental Impact Assessment Process (EIA) e e kopaneng.** EIA e tla dirwa go tsamaisana le dipatlafalo tsa melawana ya NEMA EIA (GNR982, 2014 jaaka e tlhabolotswe).

## THULAGANYO YA TSHEKATSHEKO YA KAMEGO

Thulaganyo ya EIA ke sedirisiwa sa go rulaganya le go dira ditshwetso, go tlhalosa le go sekaseka dikamego tsa lefelo, ditshedi, loago, le ikonomi tse tlhabololo e ka di nayang kgotsa porojeke e ka nnang le tsone. Go kgona go itsise thulaganyo ya go dira ditshwetso, go botlhokwa gore mathata a bathobotlhe le dilo tse ba amegileng ka tsone di itsiwe ka nako, go kgontsha setlhopha sa EIA go di sekaseka.

Thulaganyo ya EIA e letla ditlamorago tsa tikologo tsa porojeke e e tshitshintsweng go supiwa e sale gale, go batlisisiwa mo go tsweleleng ga thulaganyo ya tshekatsheko ya kamego, le go akanyetswa ke bathati ba ba dirang ditshwetso. EAP le baitseanape ba ba farologaneng gape ba supa dikamego tse di sa siamang le tse di siameng tse di ka tsogang ka ntlha ya porojeke e e tshitshintsweng le go supa dikgato tse di ka dirang tsa go tlhofofatsa tse di batlegang, go tila kgotsa go fokotsa dikamego tse di sa siamang le go tokafatsa dikamego tse di siameng

Ntlhakakaretso ya boto ya thulaganyo ya EIA e tlametswe:



## Public Participation

### Initial Call to Register:

- Advertisements, site notices, posters, letters to landowners and pre-identified I&APs. The aim of this step is to inform people of the proposed activity and to encourage initial comment and feedback.

- Ongoing Public Participation, incl: dissemination of information by means of public meetings and focus group meetings (where applicable), draft reports (Scoping & EIA), and project updates.

## Scoping Phase

Collation of initial comments, concerns, objections and specialist investigations, into a concise report (Scoping Report) which provides feedback on the following:

- Nature of the activity;
- Description of the receiving environment;
- Identification of potential feasible alternatives;
- Identification of potential positive and negative impacts; and
- Identification of knowledge gaps.

## Impact Assessment Phase

Aim of this phase is to investigate and comparatively assess the identified alternatives and make a recommendation of the most preferred alternative. In addition the identified impacts are assessed and relevant management and mitigation measures listed for inclusion in an EMPr. The EIA culminates in the compilation of an EIA Report.

Fa dithulaganyo tse di maleba di weditswe mme go rometswe ditokumente tsa bofelo go mothati yo o tshwanelang, mothati yo o tshwanelang o sekaseka kopo mme o dira tshwetso e e nang le kitso. BoI&AP ba tla itsisiwe ka tshwetso le tshwanelo ya bone ya go tsenya boikuelo fa go direga gore ba ganelane le tshwetso.

## DIKAMEGO TSA TIKOLOGO TSA KWA TSHIMOLOGONG

Nngwe ya dilo tsa konokono tse di laolang EIA e e atlegileng ke go tihomamisa gore dikamego tse di ka nnang gone (tse di siameng le tse di sa siamang) di supuwe le go batlisisiwa. Dikamego tse di oketsegileng di ka supuiwa ka kgato ya patlisiso mme baitseanape ba ba maleba ba tla akarediwa mo setlhopheng sa EIA gore go tthatlhabiwe ka nepo le ka tsela e e sa tseyeng lethakore dikamego tseno tse di ka nnang gone. Bontsi jwa dikamego tsa tikologo tse di ka nnang gone tse di amanang le porojeke e e tshithintsweng di supilwe. Dikamego tse di supilweng kwa tshimologong di tla sekasekwa mo thulaganyong eno ya EIA go akaretsa go dingwe tsa tsone:

- **Dikamego Tsa Boleng Jwa Moya le Phetoto ya Tlelaemete**
- **Dikamego Tsa Metsi a fa Godimo ga Lefatshe**
- **Dikamego Tsa Metsi a a Kafa Tlase ga Lefatshe**
- **Dikamego Tsa Tikologo**
- **Dikamego Tsa Modumo le Tebego**
- **Dikamego Tsa Loago**
- **Dikamego Tsa Ngwaoboswa le Pelentholoji**
- **Dikamego Tsa Mmu le Temothuo**
- **Dikamego Tsa Ikonomi**
- **Dikgonagalo Tsa Thoromo ya Lefatshe**
- **Kotsi ya Ditlhommo Tse Dikgolo Tse di Kotsi**

Dikamego tse di umakilweng fa godimo le dikgonagalo ga di a tshwanela go tsewa e tsone fela dikamego tse di ka supiwang ka nako ya EIA. Go ya ka kgoaganano le bathobotho, tsenyeletso ya moitseanape le tshetshetsho go ya pele e e nang le dintlha, dikamego tse di oketsegileng go ka direga gore di supuwe le go tthatlhabiwa.



Dikamego tsotlhe tse di ka nnang gone di tla supywa le go sekasekiwa go latela mokgwa o o dirisiwang wa tshekatsheko ya kamego o o kaelwang ke dipatlafalo tsa Melawana ya NEMA EIA. Tsela ya go dira dilo e e bulegileng go botlhokwa jwa go lekanya mokgwa o o dirisiwang ke go tihomamisa phelelo ya tikologo (ER) ka go akanyetsa phelelo (C) ya kamego nngwe le nngwe (tse di nang le Tlholego, Bokgakala, Lobaka, Bogolo, le go Busetša Dilo Morago) le go amanya seno le kgonagalo (P) ya kamego e e diregileng. Seno se tihomamisa diphelelo tsa tikologo. Mo godimo ga moo, mabaka a mangwe go akaretsa dikamego tse di koelenang le kgonagalo ya tatlhegelo ya dikumo tse di ka se emisediweng, di dirisiwa go tihomamisa lebaka la go baya dilo ko pele (PF) le le dirisiwang go ER go tihomamisa botlhokwa ka kakaretso (S).

Gape, go ya ka dikamego tse di supilweng le ditlathobho tsa tsone, tlhofofatso le ditekanyo tsa botsamaisi di akantshetswa Modirakopo mme tseno di akarediwa go Environmental Management Programme (EMP) mo go tihomamiseng gore dikamego dipe tse di sa siamang tse di ka se tilweng di a fokodiwa le go laolwa, mme dikamego tse di siameng di a godisiwa.

Dipatlisiso tsa moitseanape di ka dirisiwa go kaela le go sedimosetsa tshekatsheko ya dikamego tse di ka nnang gone. Dipatlisiso tsa moitseanape tse di tla akarediwang mo tshekatshekong eno di akaretsa:

- **Tshekatsheko ya Kamego ya Boleng jwa Moya**
- **Tshekatsheko ya Kamego ya Phetogo ya Tlelaemete**
- **Tshekatsheko ya Kamego ya Metsi a fa Godimo ga Lefatshe**
- **Tshekatsheko ya Kamego ya Metsi a a Kafa Tlase ga Lefatshe**
- **Tshekatsheko ya Kamego ya Ditshedi Tsa Tikologo**
- **Tshekatsheko ya Kamego ya Bokgoni Jwa Mmu le Lefatshe**
- **Tshekatsheko ya Kamego ya Modumo**
- **Tshekatsheko ya Kamego ya Tebego**
- **Tshekatsheko ya Kamego ya Loago**
- **Tshekatsheko ya Kamego Ikonomi**
- **Tshekatsheko ya Kamego ya Ngwaoboswa le Pelentholoji**
- **Dikgonagalo Tsa Thoromo ya Lefatshe le Tshekatsheko ya Kamego**
- **Tshekatsheko ya Kotsi ya Ditlhommo Tse Dikgolo Tse di Kotsi**

Tlhokego ya dithuto go ya pele tsa moitseanape go ka supywa ka thulaganyo ya patlisiso.

## **KAFA O KA NNANG LE SEABE**

Fa o ka utlwa gore o ka kgaatlhegela go tsena, kgotsa wa amiwa ke, porojeke eno, go botlhokwa gore o ikwadise o le Interested and Affected Party (I&AP) mo kgannyeng e mo go yone o tla nnang o itsisiwe mabapi le porojeke le go nwa tshono ya go nna le seabe mo thulaganyong. Tsweetswee ela tlhoko gore ke boI&AP ba ba ikwadisitsweng fela ba tla akarediwang mo dipuisanong tsa mo isagweng mabapi le porojeke le ditlhabololo tse di amegileng. O ka ikwadisa le/kgotsa wa akgela o le I&AP ka epe ya ditsela tse di latelang:

- Tlatsa foromo ya ikwadiso ya I&AP le pampiri ya dipotso tsa patlisiso mme o e busetse go EIMS ka emeile, fekeke kgotsa poso.
- Romela dikagelo tse di kwadilweng, diikwadiso, kgotsa dikopo go EIMS ka emeile, fekeke kgotso poso; le/kgotsa
- Ka go letsa mogala.

Go botlhokwa go elatlhoko gore thulaganyo ya EIA e kaelwa ka nako e e tlhalositsweng ka molao mme ka tsela eo, gore re tihomamisa go tswelela ga gago le go nna le seabe ga botlhokwa mo porojekeng, re kopa gore dikopo tsa gago tsa ikwadiso le dikagelo dipe tsa kwa tshimologong di romelwe go EIMS (dintlha tsa go ikgolaganya fa tlase).



Tsweetswee ela tlhoko gore go oketsa mo godimo, bol&AP bootlhe ba ba ikwadisitseng ba tla itsisiwe gape ka nako e e tshwanetseng ka ditshono tsa go tsaya karolo go ya pele, mmogo le go nna gone ga Pego ya Pegelo ya Patlisiso le Pego ya Kamego ya Tikologo mo dikakgelo di tla kopiwang.

**Environmental Impact Management Services (Pty) Ltd (EIMS)**

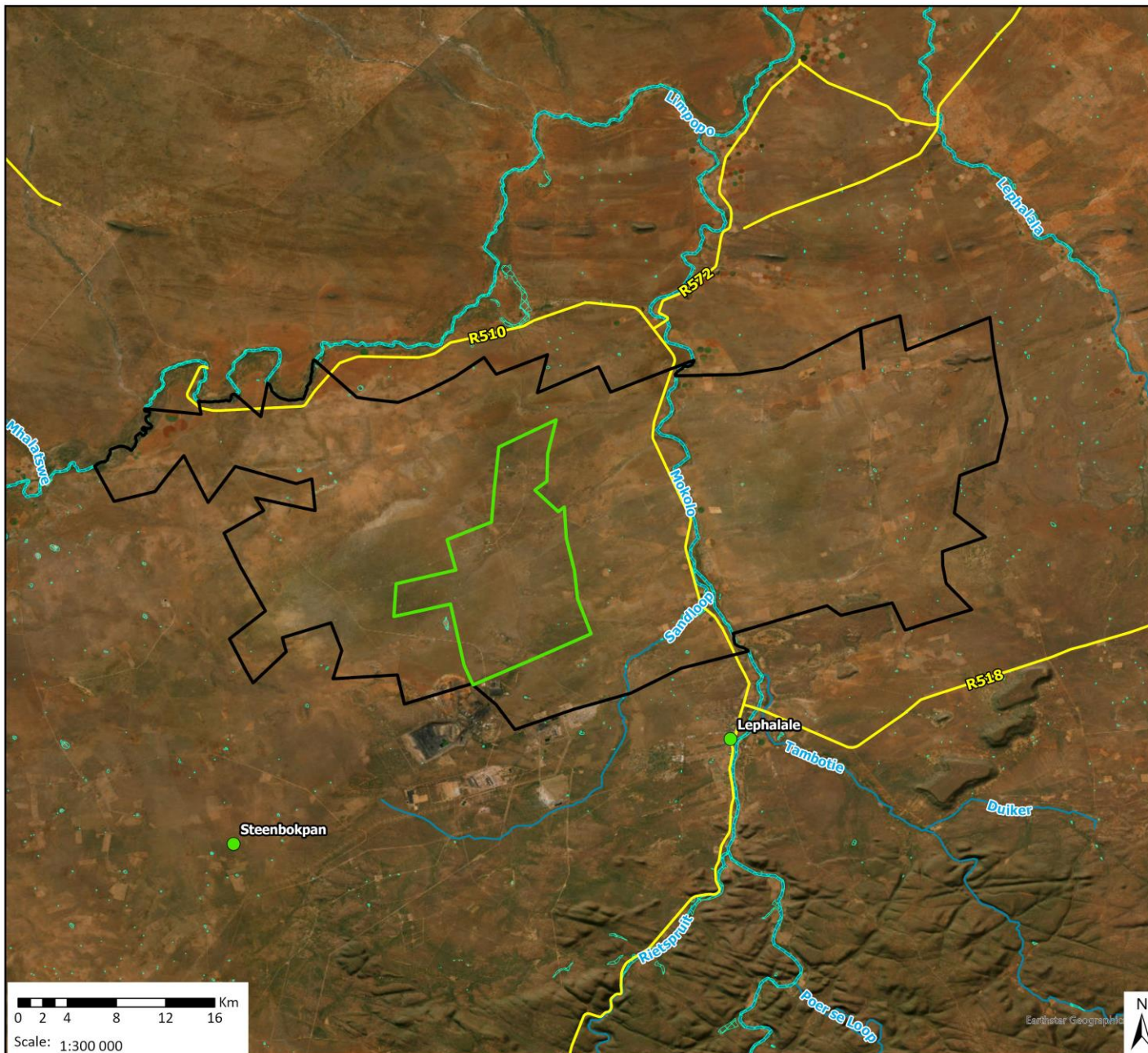
**Motho yo go ka ikgolaganngwang le ene: Lucien James**

**Nomoro ya Tshupetso ya EIMS: 1590**

**Aterese ya Poso: P.O. Box 2083; Pinetown; 2123**

**Mogala: (011) 789 7170 / Fekese: (086) 571 9047**

**Imeile: LCBM@eims.co.za**



### Locality Map

1590 Thungela Lephalale CBM EIA

#### Legend

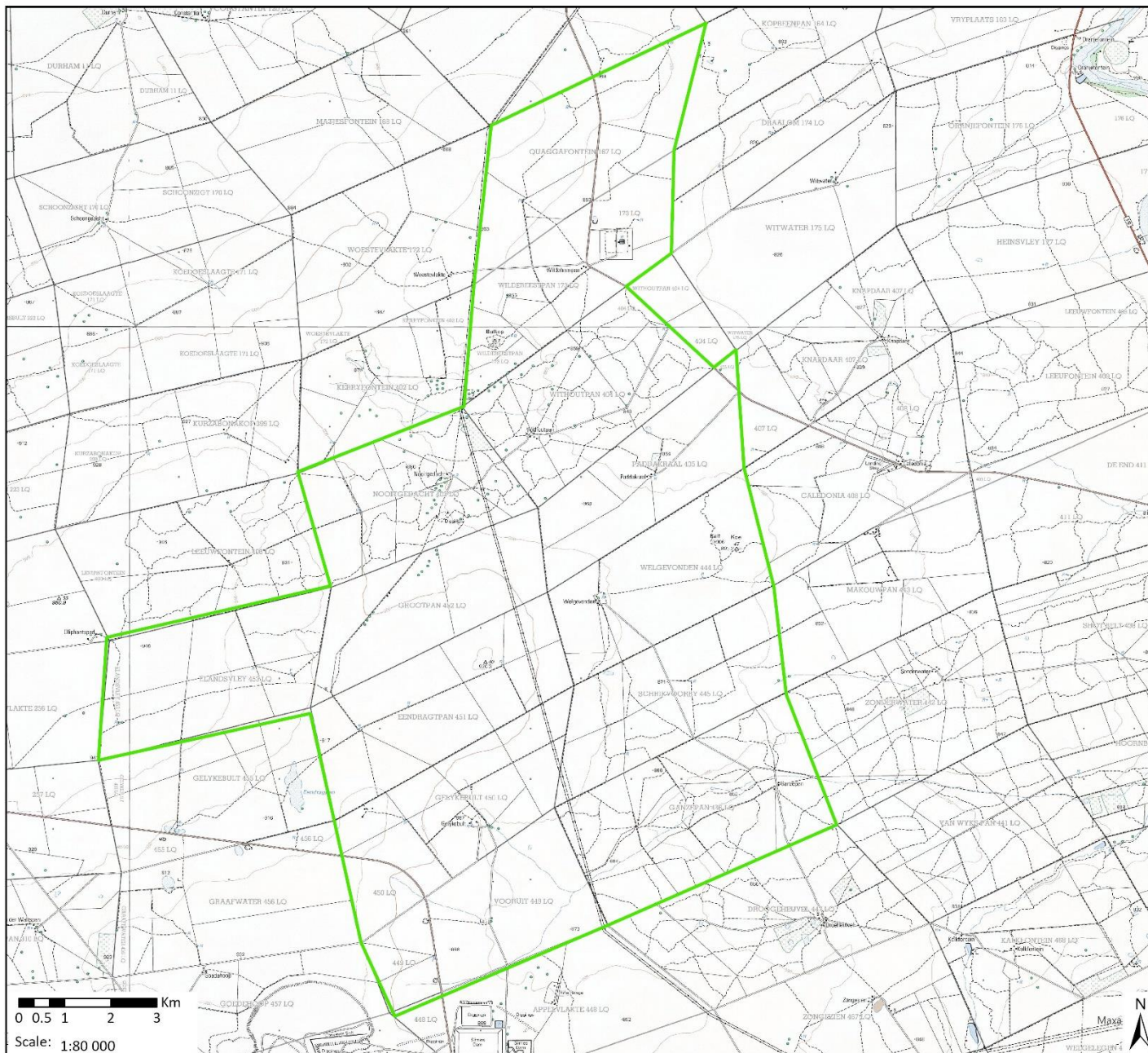
- Production Right Application Boundary
- Phase 1&2 Environmental Authorisation Application Boundary
- NFEPA Wetlands
- Rivers
- Main Roads
- Places



Data Sources:  
CSG; ESRI  
Coord System: GCS WGS 1984  
Datum: WGS 1984  
Units: Degree  
Ref: 1590\_Locality

Date: 2023/08/17  
EIMS Ref: 1590  
Compiled: JW  
Reviewed: LW  
Approved: LW






### Locality Map

1590 Thungela Lephalale CBM EIA

#### Legend

-  Phase 1&2 Environmental Authorisation Application Boundary



Data Sources:  
CSG; ESRI; 1:50k scanned Topographical map  
Coord System: GCS WGS 1984  
Datum: WGS 1984  
Units: Degree  
Ref: 1590\_topo

Date: 2023/08/30  
EIMS Ref: 1590  
Compiled: JW  
Reviewed: LW  
Approved: LW

