

Locality Map


1607 Kelvin Power Station CCGT EIA WULA

Legend

- Kelvin Power Station Boundary
- Proposed Kelvin CCGT Power Plant
- Centre Point of Site
- NFEPA Rivers
- NFEPA Wetlands
- Places
- Railway

Roads

- National Freeway
- Arterial Route
- Secondary Road
- Main Road
- Street

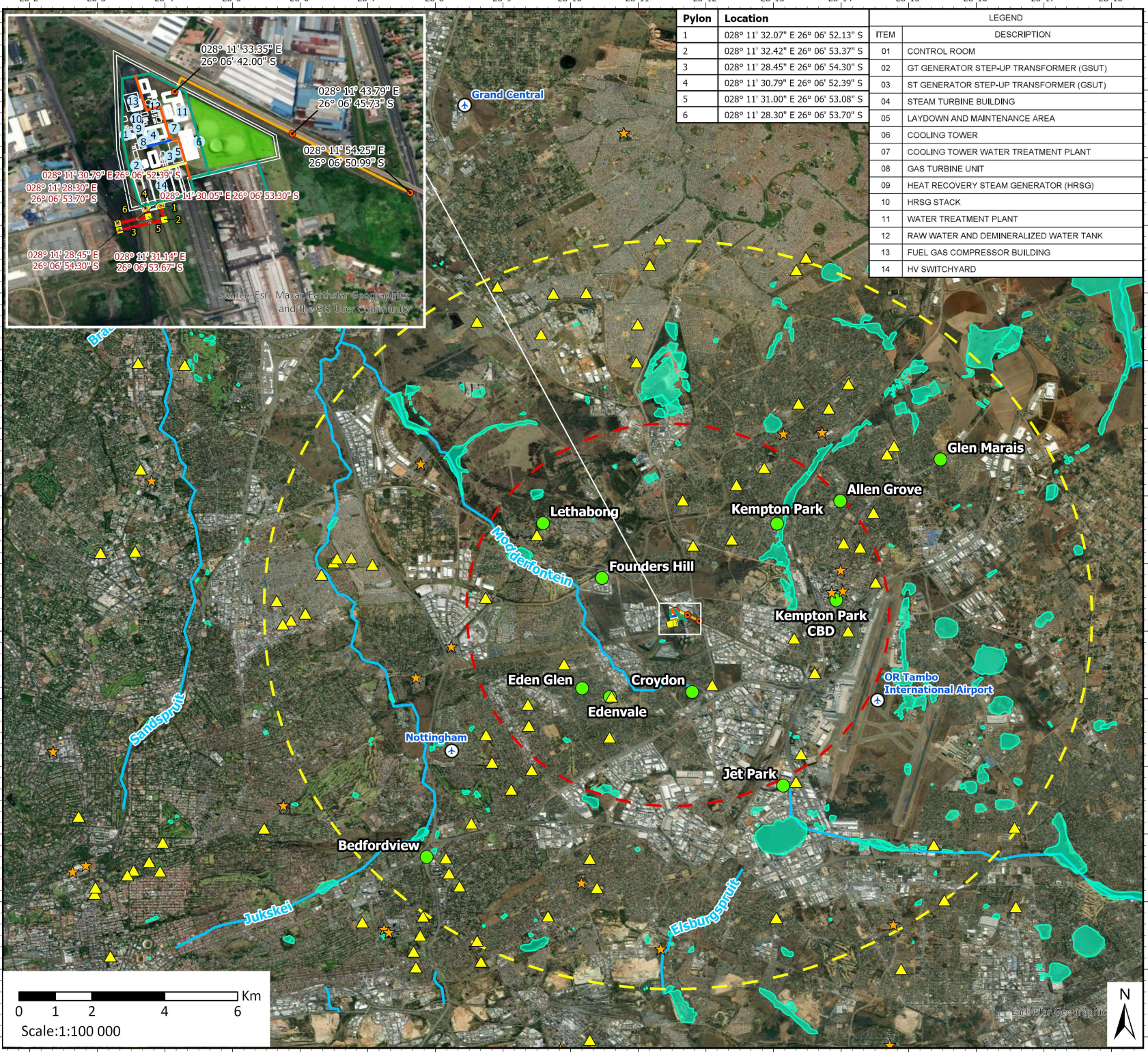


Esri, TomTom, Garmin, FAO, NOAA, USGS, Esri, CGIAR

Data Sources:
 CSG; ESRI
 Coord System: GCS WGS 1984
 Datum: WGS 1984
 Units: Degree
 Ref: 1607_Locality_1

Date: 2024/03/08
 EIMS Ref: 1607
 Compiled: JW
 Reviewed: JP
 Approved: LW





Pylon	Location
1	028° 11' 32.07" E 26° 06' 52.13" S
2	028° 11' 32.42" E 26° 06' 53.37" S
3	028° 11' 28.45" E 26° 06' 54.30" S
4	028° 11' 30.79" E 26° 06' 52.39" S
5	028° 11' 31.00" E 26° 06' 53.08" S
6	028° 11' 28.30" E 26° 06' 53.70" S

LEGEND	
ITEM	DESCRIPTION
01	CONTROL ROOM
02	GT GENERATOR STEP-UP TRANSFORMER (GSUT)
03	ST GENERATOR STEP-UP TRANSFORMER (GSUT)
04	STEAM TURBINE BUILDING
05	LAYDOWN AND MAINTENANCE AREA
06	COOLING TOWER
07	COOLING TOWER WATER TREATMENT PLANT
08	GAS TURBINE UNIT
09	HEAT RECOVERY STEAM GENERATOR (HRSG)
10	HRSG STACK
11	WATER TREATMENT PLANT
12	RAW WATER AND DEMINERALIZED WATER TANK
13	FUEL GAS COMPRESSOR BUILDING
14	HV SWITCHYARD

Sensitivity Map

1607 Kelvin Power Station CCGT EIA WULA

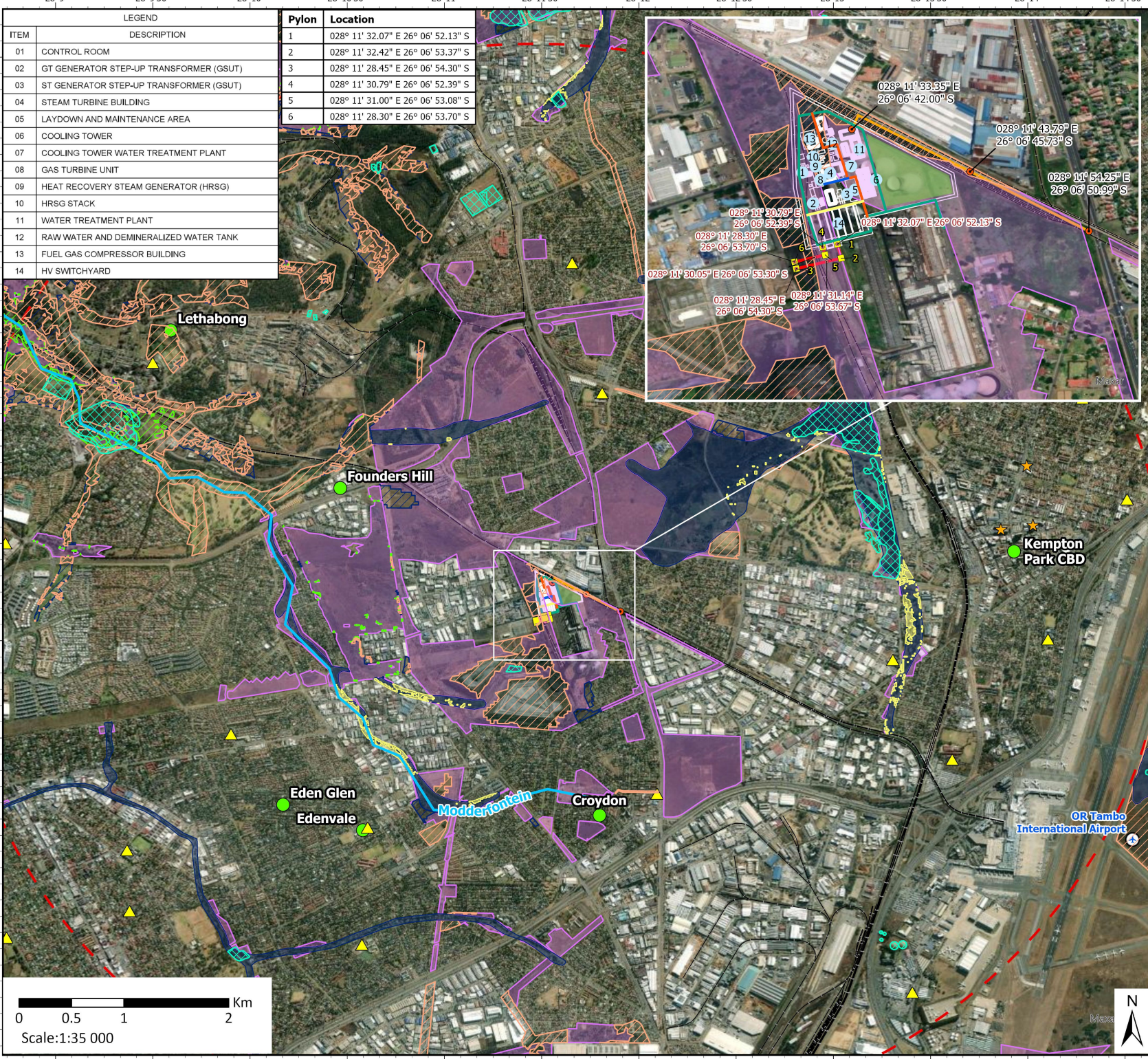
Legend	
	NFEPA Rivers
	NFEPA Wetlands
	Places
	Aerodromes
	Laydown Area
	Proposed Gas Pipeline Route
	275kV Powerline
	Powerline Points
	10km Buffer
	5km Buffer
	Pylons
	Sensitive Air Quality & Noise Receptors
	Schools
	Hospitals
	Proposed Roads
	Perimeter road
	Centre Road
	Road C-8
	Road P-C



Data Sources:
 CSG; ESRI; DFFE
 Coord System: GCS WGS 1984
 Datum: WGS 1984
 Units: Degree
 Ref: 1607_Sensitivity

Date: 2024/09/19
 EIMS Ref: 1607
 Compiled: JW
 Reviewed: JP
 Approved: LW





LEGEND		Pylon	Location
ITEM	DESCRIPTION		
01	CONTROL ROOM	1	028° 11' 32.07" E 26° 06' 52.13" S
02	GT GENERATOR STEP-UP TRANSFORMER (GSUT)	2	028° 11' 32.42" E 26° 06' 53.37" S
03	ST GENERATOR STEP-UP TRANSFORMER (GSUT)	3	028° 11' 28.45" E 26° 06' 54.30" S
04	STEAM TURBINE BUILDING	4	028° 11' 30.79" E 26° 06' 52.39" S
05	LAYDOWN AND MAINTENANCE AREA	5	028° 11' 31.00" E 26° 06' 53.08" S
06	COOLING TOWER	6	028° 11' 28.30" E 26° 06' 53.70" S
07	COOLING TOWER WATER TREATMENT PLANT		
08	GAS TURBINE UNIT		
09	HEAT RECOVERY STEAM GENERATOR (HRSG)		
10	HRSG STACK		
11	WATER TREATMENT PLANT		
12	RAW WATER AND DEMINERALIZED WATER TANK		
13	FUEL GAS COMPRESSOR BUILDING		
14	HV SWITCHYARD		

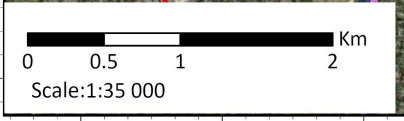
Final Sensitivity Map

1607 Kelvin Power Station CCGT EIA WULA

Legend	
	NFEPA Rivers
	NFEPA Wetlands
	Railway
	Places
	Aerodromes
	Laydown Area
	Proposed Gas Pipeline Route
	Gas Pipeline Points
	Powerline Points
	10km Buffer
	5km Buffer
	Pylons
	Sensitive Air Quality & Noise Receptors
	Schools
	Hospitals
	Proposed Roads
	Perimeter road
	Centre Road
	Road C-8
	Road P-C
	Terrestrial CBAs
	CBA 1
	CBA 2
	ESA 1
	ESA 2
	Inland Aquatic CBA (CoE)
	ESA 1
	ESA 2

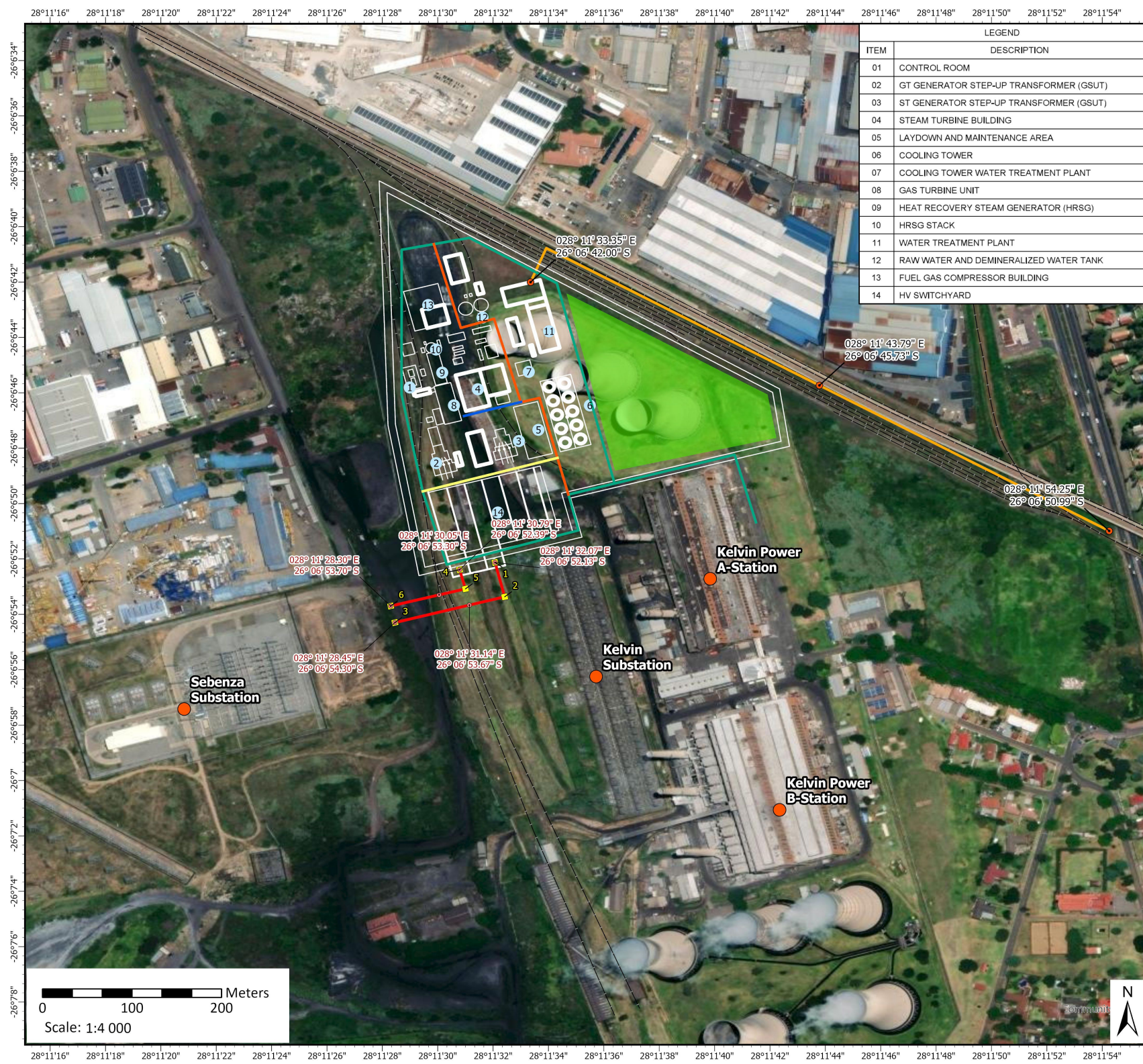


Data Sources:
 CSG; ESRI; DFFE Screening Tool
Coord System: GCS WGS 1984
Datum: WGS 1984
Units: Degree
Ref: 1607_Sensitivity_2



Date: 2024/09/19
 EIMS Ref: 1607
 Compiled: JW
 Reviewed: JP
 Approved: LW





LEGEND	
ITEM	DESCRIPTION
01	CONTROL ROOM
02	GT GENERATOR STEP-UP TRANSFORMER (GSUT)
03	ST GENERATOR STEP-UP TRANSFORMER (GSUT)
04	STEAM TURBINE BUILDING
05	LAYDOWN AND MAINTENANCE AREA
06	COOLING TOWER
07	COOLING TOWER WATER TREATMENT PLANT
08	GAS TURBINE UNIT
09	HEAT RECOVERY STEAM GENERATOR (HRSG)
10	HRSG STACK
11	WATER TREATMENT PLANT
12	RAW WATER AND DEMINERALIZED WATER TANK
13	FUEL GAS COMPRESSOR BUILDING
14	HV SWITCHYARD

Final Layout Map

1607 Kelvin Power Station CCGT EIA WULA

Legend

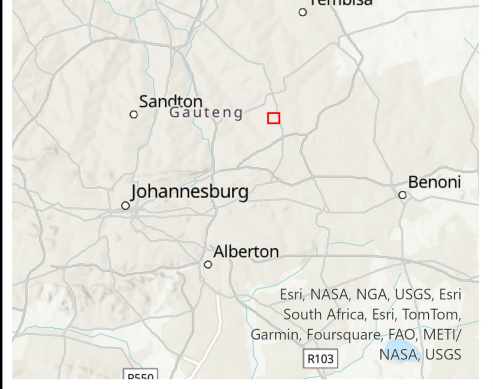
- Powerline Points
- Pylons
- Site Places
- 275kV Powerline
- Preliminary Gas Pipeline Route
- Laydown Area
- Railway

Proposed Roads

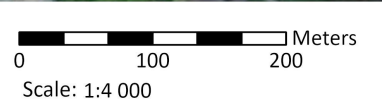
- Perimeter road
- Centre Road
- Road C-8
- Road P-C

● Gas Pipeline Points

Pylon	Location
1	028° 11' 32.07" E 26° 06' 52.13" S
2	028° 11' 32.42" E 26° 06' 53.37" S
3	028° 11' 28.45" E 26° 06' 54.30" S
4	028° 11' 30.79" E 26° 06' 52.39" S
5	028° 11' 31.00" E 26° 06' 53.08" S
6	028° 11' 28.30" E 26° 06' 53.70" S



Data Sources:
 CSG; ESRI
 Coord System: GCS WGS 1984
 Datum: WGS 1984
 Units: Degree
 Ref: 1607_SiteLayout_1



Date: 2024/09/19
 EIMS Ref: 1607
 Compiled: JW
 Reviewed: JP
 Approved: LW

