

## Site Notice:

**NOTIFICATION REGARDING OPPORTUNITY TO PARTICIPATE IN THE ENVIRONMENTAL AUTHORIZATION APPLICATION PROCESS FOR THE PROPOSED GENADE-BOERDERY MIDDELPLAATS PIVOT IN THE SOL PLATJIE LOCAL MUNICIPALITY, NORTHERN CAPE PROVINCE, SOUTH AFRICA.**

Genade Boerdery (Pty) Ltd (hereafter referred to as the applicant) has appointed Environmental Impact Management Services (Pty) Ltd (EIMS) as the independent Environmental Assessment Practitioner (EAP) to assist with undertaking the required authorisation processes (including the statutory public participation), and to compile and submit the required documentation in support of application for:

An Environmental Authorisation (EA) in accordance with the National Environmental Management Act (Act 107 of 1998) (NEMA), Environmental Impact Assessment (EIA) Regulations, 2014 as amended for the following listed activity:

- GNR 984 (2014, as amended): Activity 15 (clearance of more than 20 hectares of indigenous vegetation).

Additional listed activities and/or water uses may be identified during the process.

The applicant wishes to create 8 new cultivation (pivot) areas for the cultivation of potatoes. The development of these pivots will occur in phases over the course of 5 years and the crops will be rotated to prevent blight and allow for conservation of the soil. Once the planting cycle for a pivot area is completed, the area will be reseeded with grazing grasses for cattle. Seven of the new cultivation areas will each cover 60 hectares and one will cover 50 hectares, resulting in a total area of 4470 hectares of indigenous vegetation clearance by the end of the five-year period.

Irrigation requirements will be met using the applicant's existing Lawful Water Use, which authorises the taking of water from the Vaal River system for irrigation of up to 60 hectares. No additional water resources will be required as only one crop area will be planted at a time.

The proposed project is located on the farm Middel Plaats South No. 104, Sol Plaatje Local Municipality, Northern Cape Province. The site is "8km south of Schmidtsdrif. The centre point of the site is -28.785582°S, 24.074790°E. Please refer to the attached project locality map.

EIMS will be following the procedures defined in the Environmental Impact Assessment (EIA) Regulations (GNR982 of 2014, as amended) for undertaking a Scoping and EIA process. In accordance with Chapter 6 of the EIA Regulations, a public participation process will be undertaken. You are hereby invited to register and comment on the proposed project and application(s). In order to ensure that you are identified and registered as an interested and affected party (I&AP) and that your comments are captured, please submit your name, contact details, the reason for your interest in writing or telephonically, to EIMS. Please note that only registered I&APs will be informed of future project information and opportunities for participation. By registering as an interested and affected party you consent to the collection and processing of your personal information as per the EIMS Privacy Notice available at [www.eims.co.za/public-participation](http://www.eims.co.za/public-participation). In order to avoid missing out on opportunities for public participation, please submit I&AP registrations, or any queries, comments, or concerns with regard to this application, as soon as possible to EIMS.

**KENNINGSWING MET BETREKKING TOT DIE GELEENTHEID OM DEEL TE NEEM AAN DIE OMGEWINGSIMPACTING PROSES VIR DIE VOORGESTELDE GENADE-BOERDERY MIDDELPLAATS SPILPUNT, IN DIE SOL PLATJIE PLAATSE MUNISIPALITEIT, NOORD-KAAP PROVINSIE, SUID-AFRIKA.**

Genade Boerdery (Edms) Bpk (hierna verwys na as die aansoeker) het Environmental Impact Management Services (Edms) Bpk (EIMS) as die Omgewingsassesserings Praktisyn (EAP) aangestel om te help met die onderneming van die vereide magtigingsprosesse (insluitend die statutêre openbare deelname proses), en die samestelling en indiensing van die vereide dokumentasie, ter ondersteuning van die aansoek vir:

'n Omgewingsmagtiging (OM) in ooreenstemming met die Nasionale Omgewingsbestuurswet (Wet 107 van 1998) (NEMA), Omgewingsimpakbepaling (OIB) Regulasies, 2014 soos gewysig vir die volgende gelyste aktiwiteit:

- GNR 984 (2014, soos gewysig): Aktiwiteit 15 (opruiming van meer as 20 hektaar inheemse plantegroei).

Bykomende gelyste aktiwiteite en/of watergebruik kan tydens die proses geïdentifiseer word.

Die aansoeker wil 8 nuwe verbouings (spilpunt) areas skep vir die verbouing van aartappels. Die ontwikkeling van hierdie spilpunte sal in fases oor die verloop van 5 jaar plaasvind en die gewasse sal geroteer word om roes te voorkom en die bewaring van die grond moontlik te maak. Sodra die plantekyk vir 'n spilpunt voltooi is, sal die gebied heraan word met winddiggrasse vir beeste. Sien van die nuwe verbouingsgebiede sal elk 60 hektaar beslaan en een sal 50 hektaar beslaan, wat sal lei tot die verwydering van 'n totale oppervlakte van 4470 hektaar van inheemse plantegroei teen die einde van die vyf-jaar tydperk. Besproeiingsvereistes sal nagaan word deur die aansoeker se bestaande Wettige Watergebruik te gebruik, wat die neem van water uit die Vaalrivierstelsel vir besproeiing van tot 60 hektaar magtig. Geen bykomende waterbronne sal benodig word nie aangesien elks een gewasarea op 'n slag geplant sal word.

Die voorgestelde projek is geleë op die plaas Middel Plaats South No. 104, Sol Plaatje Plaattjse Munisipaliteit, Noord-Kaap Provinsie. Die terrein is "8km suid van Schmidtsdrif. Die middelpunt van die terrein is -28.785582°S, 24.074790°E. Verwys asseblief na aangehegte projekliggingkaart.

EIMS sal die prosedures volg soos omskryf in die Omgewingsimpakbepaling (OIB) Regulasies (GNR982 van 2014, soos gewysig) vir die onderneming van die Omvang- en Omgewingsimpakbepaling (OIB) proses. In ooreenstemming met Hoofstuk 6 van die OIB Regulasies, sal 'n openbare deelname proses onderneem word. U word hiermee uitgenooi om te registreer en kommentaar te lewer op die voorgestelde projek en aansoek/e. Om te verseker dat u geïdentifiseer en geregistreer is as 'n I&AP en dat u kommentaar wagged word, dien asseblief u naam, kontakbesonderhede, die rede vir u belangstelling of enige bekommernisse, skriftelik of telefonies by EIMS indien. Neem asseblief kennis dat slegs geregistreerde I&AP's ingelig sal word oor toekomstige projekinligting en geleenthede vir deelname. Deur te registreer as 'n belanghebbende en geïdentifiseerde party stem u in tot die insameling en verwerking van u persoonlike inligting soos per die EIMS Privaatheidsverklaring beskikbaar by [www.eims.co.za/public-participation](http://www.eims.co.za/public-participation). Om te verhoed dat geleenthede vir publieke deelname misgeloop word, dien asseblief I&AP-registrasies, of enige navrae, kommentaar of bekommernisse met betrekking tot hierdie aansoek, so gou moontlik in by EIMS by.

Contact Person/ Kontak Persoon: Alexander Mulpa

EIMS Reference Number/ EIMS Verwysingsnommer: 1683

Postal Address/ Posadres: P.O. Box 2083, Pienegorie 2123

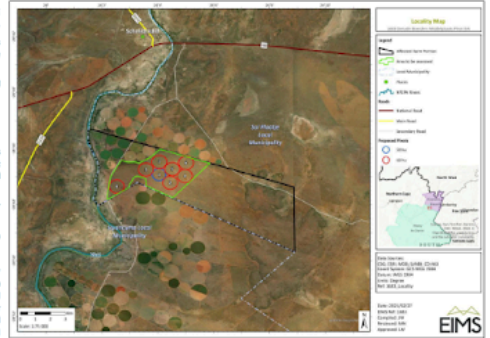
Fax/ Faks: (086) 571 9047

E-mail/ E-pos: [midelplaats@eims.co.za](mailto:midelplaats@eims.co.za)

Telephone/ Telefoon: (011) 789 7170



SCAN HERE



Locality Map:



A1 Notice: 23/04/2025 13:30:31; GPS Coordinates: -28.975637, 24.013150



Middleplaats 1

A1 Notice: 23/04/2025 13:33:09; GPS Coordinates: -28.797069, 24.036759



2

A1 Notice: 23/04/2025 13:37:54; GPS Coordinates: -28.704101, 24.082409



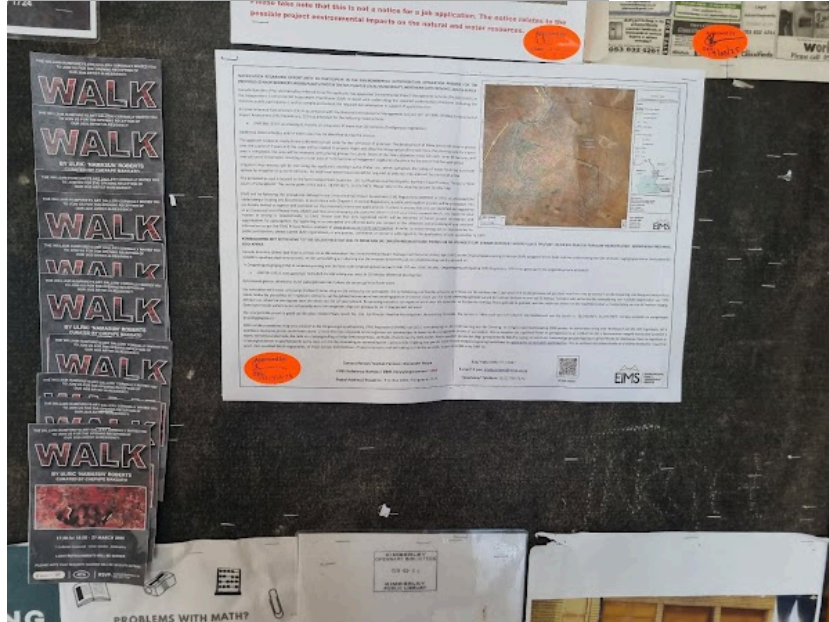


A1 Notice: 23/04/2025 13:42:18; GPS Coordinates: -28.705414, 24.063800



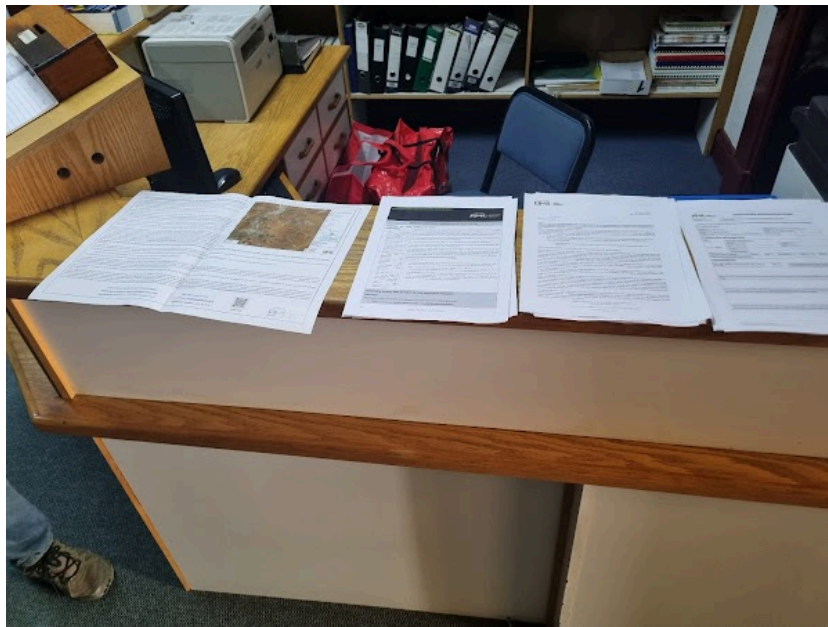
4

Poster: 23/04/2025 13:44:52; GPS Coordinates: -28.745328, 24.765835



Poster 1

Poster: 23/04/2025 13:52:30; GPS Coordinates: -28.746878, 24.766256



Poster 2